



2020 CONFERENCE

Universal Healthcare
Across the Lifecourse



WELCOME MESSAGE

Dear friends of APRU,

Welcome to APRU Global Health Virtual Conference 2020. Despite the challenges to our life and societies imposed by the Covid-19 pandemic, Fudan University is honored to host this annual conference. In response to this global disaster event, we are obligated to endeavor at every level to advance the frontiers of human knowledge. Accordingly, much emphasis is being laid on international cooperation and open exchanges, thus fitting perfectly the founding principles of APRU, which is to be a transnational and cross-regional university-consortium. Fudan is keen to work with all of you to keep promoting academic advancements in all areas related to our common wellbeing.

We are grateful to the conference committee for developing stimulating and timely themes to focus on universal healthcare across the life course. The conference will offer ideas concerning global health security, elderly's health, women's health, immigrants' health, and responses to the coronavirus pandemic. Our discussions will render specific applications in various matters, e.g. the burden and control of global disease, global health service system, and global health governance. With much valuable and insightful input, I am convinced that this conference will further consolidate the partnerships among APRU member universities.

I wish APRU Global Health Virtual Conference 2020 a big success, and we look forward to receiving all of you in Shanghai in the near future.

Sincerely yours,

Prof Ningsheng Xu
President, Fudan University



WELCOME MESSAGE

On behalf of APRU, I welcome you to the 14th Annual APRU Global Health Conference.

We are a network of leading research universities around the vast Pacific Ocean, linking the Americas, Asia, and Australasia, providing a voice of knowledge and innovation for the Asia-Pacific region. The Global Health Program is one of our long-standing programs that addresses challenges from infectious diseases to mental health.

This year's conference theme "Universal Healthcare Across the Life Course" focuses us on the fact that, in 2017, less than half the global population was covered by essential health services (World Health Organization, 2017).

Universal Health Coverage throughout life is critical to ensuring all people have access to safe and effective medicines and vaccines. The Sustainable Development Goal (SDG) 3 commits us to ensuring healthy lives and promoting well-being for all at all ages.

The multidisciplinary nature of the theme is attested to by the subsidiary themes related to migration, aging and women. As research universities, we are also addressing the urgent relevance of climate change, inequality and technological discovery in order to inform a public policy agenda capable of confronting inter-linked challenges. These overlapping crises are of a seriousness and on a scale that the world has not confronted before.

This conference is being held online owing to Covid-19. This has an advantage: anyone can join from their homes, workplaces, schools or even from their cars.

We are very grateful to Fudan University for hosting this year's conference in this uncertain year especially the organizing team at the School of Public Health. We also thank the Global Health Program's Director, Dr. Mellissa Withers, for her leadership, and the Advisory Board for their efforts over the past year.

I wish you a productive and successful conference.

Dr Christopher Tremewan
Secretary General, APRU



WELCOME MESSAGE

As the Director of the APRU Global Health Program, it is my pleasure to welcome you to the 14th annual conference. With the ongoing pandemic, global health is in the spotlight more than ever before. COVID-19 has highlighted the vast inequities in our societies that increase vulnerability to negative health outcomes among some populations. This year, our conference underscores the importance of working together to achieve universal health coverage. I would like to convey my appreciation to Fudan University for hosting this event. I would also like to express my gratitude to the APRU Secretariat and our Advisory Board members for their support of the program over the past year. And to our speakers, moderators, and participants, thank you for taking time out of your busy schedules to join this conference. It's very unfortunate that we can't be together this year in person. But the virtual platform has allowed many more people to be able to attend the conference. In fact, this is our biggest conference to date! This conference gives us the opportunity to share our perspectives and learn from each other. Whether this is your first conference, or you are a long-time member, I invite you to get more involved in the APRU Global Health Program and to join our efforts to improve global health education and research among our universities. Take good care.

Best wishes,

Dr Mellissa Withers

Global Health Program Director, APRU

Associate Professor, USC Institute on Inequalities
in Global Health



APRU

The Voice of
Knowledge &
Innovation

THE ASSOCIATION OF
PACIFIC RIM UNIVERSITIES
(APRU) IS THE VOICE OF
KNOWLEDGE AND
INNOVATION FOR THE ASIA-
PACIFIC REGION. WE BRING
TOGETHER THOUGHT
LEADERS, RESEARCHERS,
AND POLICY-MAKERS TO
EXCHANGE IDEAS AND
COLLABORATE ON EFFECTIVE
SOLUTIONS TO THE
CHALLENGES OF THE
21ST CENTURY.



By facilitating collaboration and enhancing regional dialogue, the APRU Global Health Program works to bridge boundaries and divides, to promote and protect the health of our global population. The Program, now in its 14th year, is hosted by the University of Southern California, is comprised of faculty and students from around the region to foster:

- Capacity-building and knowledge-sharing across disciplines and nations
- Innovative pedagogical methods and virtual exchange
- Creativity, research, and leadership skills among students
- Increased opportunities for networking and collaboration
- Collective action to influence policy

Through the APRU Global Health Program, members leverage their leading-edge research, education/training programs and evidence-based health interventions to address today's most pressing global health issues, including aging, faced-paced urbanization, rising rates of chronic diseases, migration, mental health, infectious disease outbreaks, global health security, and more.

2019 - 2020

GLOBAL HEALTH PROGRAM ADVISORY GROUP MEMBERS



Sofia Gruskin
Program Chair
University of Southern
California



Mellissa Withers
Program Director
University of Southern
California



Judith McCool
University of Auckland



Richard Taylor
University of New South
Wales Sydney



Masamine Jimba
University of Tokyo



Chang-Chuan Chan
Taiwan University



Mu Li
University of Sydney



Christina Schönleber
APRU



Juhwan Oh
Seoul National University



Sanjay Rampal
University of Malaya



Erlinda Castro-Palaganas
University of the
Philippines



PinPin Zheng
Fudan University

CHAIR

Sofia Gruskin is Director USC Institute on Inequalities in Global Health, Chief, Policy and Global Health Division, and Professor USC Keck School of Medicine and USC Gould School of Law, University of Southern California. Professor Gruskin is recognized as a pioneer in fostering multi-disciplinary approaches to global health with work ranging from global policy to the grassroots level, and is particularly recognized for her efforts to bring attention to the effects of law and legal frameworks on health outcomes for key and vulnerable populations. Her work has been instrumental in developing the conceptual, methodological and empirical links between global health and human rights, with a focus on sexual and reproductive health, child and adolescent health, HIV/AIDS, gender-based violence, non-communicable disease and health systems. She has worked closely with the United Nations system, in particular WHO and UNDP, for many years. Professor Gruskin is an associate editor for *Global Public Health*, on the editorial advisory board for *Revue Tiers Monde*, a trustee of *Sexual and Reproductive Health Matters*, and was an associate editor of the *American Journal of Public Health* and editor in chief for *Health and Human Rights* both for over a decade.

DIRECTOR

Mellissa Withers, is Associate Professor at the University of Southern California Keck School of Medicine in the Department of Preventive Medicine. She is based at the USC Institute on Inequalities in Global Health. She received a PhD from the Department of Community Health Sciences at the UCLA Fielding School of Public Health with a minor in cultural anthropology. She also holds a Master's in International Health from the Johns Hopkins Bloomberg School of Public Health and a BA in international development from UC Berkeley. Her primary research interests lie in community participatory research, mental health, gender-based violence, and global sexual and reproductive health. She teaches classes for undergraduate and graduate students, including introduction to global health, global health ethics, global health leadership, and case studies in global health. Dr Withers is the editor of two books: *Global Perspectives on Sexual and Reproductive Health Across the Lifecourse*, and *Global Health Leadership: Case Studies from the Asia-Pacific* (in press). She has also published more than 40 scientific articles and serves on the editorial boards of six international global health journals.

MEMBERS

Chang-Chuan Chan is the Dean of College of Public Health, the Director of the Global Health Center, and a professor at the Institute of Occupational Medicine and Industrial Hygiene at Taiwan University. His research focuses on environmental epidemiology, exposure and risk assessment, and global health governance, with collaborative projects in Malaysia, Thailand, Mongolia, India, South Korea, Japan, U.S., and European Union. He has published over 170 scientific papers in SCI journals. Prof. Chan is currently the chair of the ISEE Asia Chapter, and councilor of the Association of Pacific Rim Universities (APRU) Global Health Program. He is also an advisor to the Taipei City mayor, a member of the Taipei 2050 Vision Committee, and member and Vice Executive Officer of the Council for Sustainable Development, Taipei City Government.

Masamine Jimba is a professor and chair in the Department of Community and Global Health at the Graduate School of Medicine, University of Tokyo. He studied at Japan's National Institute of Public Health and the Harvard School of Public Health. His practical experience includes disease control and health promotion activities in developing countries, first as a WHO Health Coordinator for the Gaza Strip and the West Bank from 1994 to 1996. From 1996 to 2001, he implemented health promotion programs in rural Nepal, using a community development approach, as a public health expert with the Japan International Cooperation Agency. In 2002, he came back to Japan to have a base in the university and has been working on health projects in Asia, Africa and Latin America. His current research interests include health promotion, global health policy, health and development, and maternal, newborn and child health.

Mu Li is a Professor of International Public Health at School of Public Health, the University of Sydney. Her main research contributions are in women's and children's health and nutrition, and public health program evaluation. She has a strong track record in developing cross cultural and cross discipline research collaborations. She led the research collaboration between Fudan University, China and the University of Sydney in one of the world's first mhealth studies in infant and young child feeding; several research capacity building programs, including the DFAT Australian Awards Fellowship program on Regional Collaboration for Childhood Obesity Prevention Research, involving researchers from China, Indonesia, Thailand and Vietnam; Evidence-based Policy and Program Development for Improved Adolescent Health and Nutrition, Indonesia; and contribute to the Short Course of increasing the Development Impact of Agricultural Research in Africa. She led the development and transition from Master of International Public Health to Australian first Master of Global Health program and was the inaugural director of the program. She is an Adjunct Professor at Faculty of Public Health, Airlangga University, Indonesia, and at School of Public Health, Fudan University, China.

Judith McCool is Associate Professor in the School of Population Health, Faculty of Medical and Health Sciences, University of Auckland. Since 2009 she has been actively involved in the delivery of postgraduate courses in global health for the Master of Public Health and since 2015 been the Director of the Master of Health Leadership Program and leader for Global Health Leadership stream. In 2008, Dr. McCool established the Global Health Group, a network of academics and practitioners involved in global health, with a focus on the Asia Pacific Rim region. The group has received a Vice Chancellors Strategic Development Award and an International Research Team Development Award, reflecting the contributions of the group to development of global health at the University of Auckland. Dr. McCool's research interests include investigating the role of media, including social and digital media as health communication, commercial determinants of health (tobacco industry investments and impacts on global health) and more recently, the potential role of mobile health initiatives for low resourced settings. She has supervised graduate students on a range of global and public health topics with a central interest in improving knowledge for translation into policy and practice. She was instrumental in establishing partnership within key agencies in the Pacific region, including the Fiji National University and The Fred Hollows Foundation to support their research capacity.

Juhwan Oh is Professor of International Health Policy and Management of Seoul National University College of Medicine. He is interested in Maternal, Child, and Adolescent Health, Health Insurance Policy, and Health Inequality. He is also serving as editor-in-chief of Journal of Global Health Science, which is the official journal of Korean Academic association of Global Health.

Erlinda Castro Palaganas is a professor of management, an internationally distinguished and respected nurse leader, researcher and academician. She is a pioneer in qualitative nursing research and a multi-awarded health research mentor. She is the founding president of the Philippine Nursing Research Society, Inc. and the Cordillera Center for Research and Health Concerns. She is the VP for External Affairs of the Philippine Association of Medical Journal Editors and the Executive VP of the Asia Pacific Association of Medical Editors. She is a Professor at University of the Philippines - Baguio where she excels in teaching, research and extension work, and was conferred the UP Scientist I status (2019-2021). She is a nurse and continuously serve the nurses and the nursing profession in her capacity as Governor for the Philippine Nurses Association and as Editor-in-Chief of the Philippine Journal of Nursing, a WHO-WPRIM and Scopus indexed nursing journal. As a nurse, she has opted to commit herself to serve the Filipino people. She is a staunch advocate of people's rights and welfare -a people's nurse.

Sanjay Rampal is a Public Health Physician, and Professor of Epidemiology and Public Health at the Department of Social and Preventive Medicine, Faculty of Medicine, University of Malaya. Dr Rampal was medically trained in India and has served in the Ministry of Health Malaysia (1998-2005) and University of Malaya (2005 onwards). He obtained his MPH in 2004 from Harvard University and completed his PhD in Epidemiology from Johns Hopkins University in 2014. He is a member of the Global Network for Academic Public Health, Association of Schools and Programs of Public Health, and chairs the Specialty/Subspecialty Education Subcommittee for Public Health within the Malaysian Medical Council. He is a Fellow of the Academy of Medicine Malaysia and contributes actively to the College of Public Health Medicine. He had also previously chaired the Malaysian National Conjoint Committee for Public Health Postgraduate Medical Program. Dr Rampal's research focuses on the epidemiology and prevention of cardiovascular disease. He is particularly interested in elucidating common upstream factors of the different Non-Communicable Diseases. He hopes to further leverage this information to design and implement better prevention programs to improve our healthcare system.

Christina Schönleber is a Senior Director (Policy and Programs) at APRU, is responsible for the direction of APRU's strategic priority of informing policy development on solutions to Asia Pacific challenges and the development of APRU's research related program areas. As Head of Knowledge Exchange at the Royal College of Art in London, she developed and implemented the RCA's strategy for Knowledge Exchange and set up key industrial and third-party collaborations with major international corporations such as Tata Consultancy Services and Visa Europe. As Assistant Director of the University of Kent's Innovation and Enterprise Department Christina led the University's Knowledge Exchange development in key areas related to science and social science. Following this she developing Sino-German business partnerships as a business consultant in Hong Kong. Before joining the higher education sector, Christina held senior roles with international media corporations addressing key IP and licensing challenges. Born in Germany Christina Schönleber was educated in Germany, the USA, the UK and Hong Kong. She holds an MBA, a Bachelor of Science Degree and studied Mandarin for non-Chinese speakers.

Richard Taylor is Professor of Public and International Health at the University of New South Wales. He has continuing international experience in the Asia Pacific, particularly in the Pacific Island region, but also in Sri Lanka, India, China, Mongolia and Vietnam, and has been involved in the epidemiology and disease control aspects of the health transition, especially concerning cardiovascular disease (CVD), diabetes mellitus (DM) and cancer. He also has experience in control of communicable and vector-borne disease, and Indigenous health and mortality in Australia. Current research in the Pacific Islands focuses on mortality and cause of death analysis for the prioritisation and evaluation of prevention and control activities, and cervical cancer screening in Fiji, and current research in Sri Lanka involves evaluation of community health promotion to reduce CVD and DM, and risk factors.

Pinpin Zheng is the professor and director of Department of Preventive Medicine and Health Education in Fudan University. Also, she is the director of the Tobacco Control Research Center of Fudan Health Communication Institute. Up to now, she has led many tobacco control programs supported by the WHO, NIH, Bloomberg Initiative to Reduce Tobacco Use, and National Natural Science Funding of China. She has published over 40 papers on tobacco control in international journals. In 2012, she won the third award of Shanghai Decision Consultation for the efforts in advocating and evaluating the smokefree Shanghai Expo. From 2016 to 2017, she and her team contributed to advocating the smoke free legislation in Shanghai which was successfully implemented since 2017.

RESEARCH WORKING GROUPS

CHAIRS



Leander Marquez
University of the Philippines

BIOETHICS



Shubha Kumar
University of Southern California

EDUCATION & TECHNOLOGY



Maosheng Ran
Chinese University of Hong Kong

MENTAL HEALTH



Brian Hall
New York University Shanghai

MIGRANTS



Martin Chi Sang Wong
Chinese University of Hong Kong

NON-COMMUNICABLE DISEASES

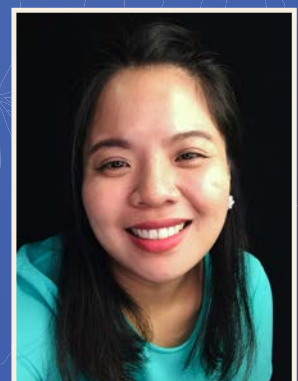
STUDENT AMBASSADORS



Marigrace Buendia

Marigrace Buendia is a senior at the University of Southern California, completing a dual degree in Health Promotion and Disease Prevention (B.S.) and Global Medicine (M.S., Management Track). She is also completing a specialization in Applied Analytics. Marigrace is originally from Orlando, FL, and plans to pursue a career in global health policy and project management. Apart from being a Student Ambassador for APRU, she also interns at the Violence Intervention Program of the LAC+USC Medical Center, where she works with the administrative and development team to serve victims and families of domestic and sexual violence. Marigrace hopes to pursue a doctorate in public health in the future and wishes to work for an international NGO like UNICEF.

Mary Grace Rentoria, fondly known by friends and colleagues as Meg, has been named one of the Student Ambassadors since 2017. Meg is a registered nurse by profession and works as an Institutional Development Affairs Officer. She is also the head of school health services in JCSGO Christian Academy with nine years experience in school health. She is an elected Executive Board Member (Secretary) of the Philippine Private School Health Officers' Association, a nationwide network of physicians, dentists and nurses rendering services in the academe. At present, she is completing her degree in Master in International Health program (Health Promotion track) at the University of the Philippines Open University. Her research interests include school health, health promotion and adolescent health.



Meg Rentoria

STUDENT AMBASSADORS



**Haytham
Sheerah**

Dr. Haytham A. Sheerah is an epidemiologist who believes that all health care organizations should adopt a good health system for their clear purpose to continually reduce the burden of illness and to improve the health care. He specializes in Nutrition Epidemiology, Non-Communicable Diseases, and Global health.

Currently, Dr. Sheerah is accepted in the Global Clinical Scholars Research Training (GCSRT) 2021 Post-Graduate Program at Harvard Medical School. Dr. Sheerah has completed his doctoral degree from Osaka University Graduate School of Medicine Department of Public Health in 2020. Prior to this, he had received his bachelor's degree from King Saud University Medical School in 2012.

Dr. Sheerah worked in 2013 at King Saud University at The Center of Excellence in Thrombosis and Hemostasis (CETH) as a Project Manager. Afterward, in 2014 he worked at King Faisal Specialist Hospital & Research Centre as a coordinator for the national hemophilia research. For the past couple of years, Dr. Sheerah was involved in several cohort research studies. His interest and dedication to global health drove him to be a student ambassador in APRU global health and active scientist in the 'Your DNA, Your Say' genetic research project. While his consistent attitude toward Aging epidemiology guided him to participate in the (Japan-S. Korea-China) Campus Asia program and become an alumni.



**Tasdidaa
Shamsi**

Tasdidaa Shamsi is a second-year Doctor of Public Health student at University of Malaya (UM). She has an undergraduate degree in Biomedical Engineering from the University of Sheffield, UK and an MPH and MBA from Bangladesh.

She is very interested in working with Occupational Health and Safety projects having worked in two food factories in UK specializing in HACCP (Hazard Analysis and Critical Control Points). She has worked as the General Secretary of the BAPHSO (Bangladesh Public Health Society) working on projects related to health and hygiene. She had also done fundraising and set up two ECD (Early Childhood) centers in two slums of Dhaka, Bangladesh. Currently, she is focusing on the mental health status of

working women in her Doctoral studies. She has publications on Bangladeshi workers working in the Maldives and seasonal workers in Cox's Bazaar. She has ten publications recorded under her Google Scholar profile. She has conducted a small study on job content of school teachers in Dhaka which was published in Medical Journal of Malaysia last year. One of her most recent work was as an intern for Bangladesh Institute of Labor Studies, an internship requirement for UM where she looked at Job Content and Musculoskeletal Disorders among Butchers in Dhaka City, Bangladesh, a study which is a first of its kind and has been submitted to the regional ILO office in India for further work.

UNIVERSAL HEALTHCARE ACROSS THE LIFECOURSE

The APRU Global Conference is a significant occasion that brings together those dedicated to global health from across the globe. This year, the conference will focus on the theme, Universal Healthcare across the Life Course, and defines it in the global health practice, research, and theory. The theme reflects not only the inter-dependence of the whole society but also health equity throughout the life course within and among countries.

To ensure all people have access to needed promotive, preventive, curative and rehabilitative health services, Universal Health Coverage (UHC) across the life course is a critical component to achieve the Sustainable Development Goal (SDG) 3: Ensure healthy lives and promote well-being for all at all ages in.

We invite global health professionals and their partners from all relevant sectors to embrace the agenda on UHC across the life course and further explore how global health contributes to:

- Ensure health equity throughout the life course, within and among countries
- Enhance collaboration between the health sector and other social sectors for sustainable health and wellbeing
- Design and implement effective and fair patient-focused integrated care such as promotive, preventive, curative and rehabilitative services, and palliative care
- Strengthen health in all policy approaches to reduce the burden of disease, both communicable and non-communicable, and ensure the sustainability of the health system as well as the security system
- Build effective, accountable and inclusive governance at all levels that ensure population health and well-being



DAY 1

OCTOBER 19 | MONDAY

SCIENTIFIC SESSION

9:00 am - 9:20 am | OPENING SESSION & WELCOME SPEECHES

Welcome from Fudan University

Welcome from APRU

9:20 am - 9:50 am | KEYNOTE ADDRESS

Dr Margaret Chan

Inaugural Dean of Vanke School of Public Health, Tsinghua University

Emeritus Director-General of World Health Organization

9:50 am - 10:45 am | PLENARY SESSION: Universal Health Coverage

Plenary Talk

Dr Minghui Ren

Assistant Director-General, Universal Health Coverage/ Communicable and Noncommunicable Diseases, World Health Organization

Plenary Panel

Moderator: **Prof Chantal Herberholz**, Faculty of Economics, Chulalongkorn University

Prof Zhijie Zheng, School of Public Health, Peking University

Prof Wen Chen, School of Public Health, Fudan University

10:45 am - 10:55 am | BREAK

10:55 am - 11:05 am | INTRODUCTION TO APRU GLOBAL HEALTH PROGRAM

Prof Mellissa Withers

Global Health Program Director, APRU

Associate Professor, Institute on Inequalities in Global Health, University of Southern California

11:05 am - 12:00 nn | PANEL I: Aging

Moderator: **Prof Cynthia Chen**, Saw Swee Hock School of Public Health, National University of Singapore

Prof Indri Hapsari, Faculty of Public Health, University of Indonesia

Prof Hua Fu, School of Public Health, Fudan University

Prof Angelique Chan & Dr Ad Maulod, Centre for Ageing Research and Education

National University of Singapore

DAY 2

OCTOBER 20 | TUESDAY

SCIENTIFIC SESSION

9:00 am - 9:20 am | KEYNOTE ADDRESS

Prof Alejandro Gaviria

President of Universidad de los Andes

Former Minister of Health and Social Protection, Colombia

9:20 am - 10:00 am | PLENARY SESSION: Life Course

Moderator: **Prof Gita Mishra**, School of Public Health, University of Queensland

Deputy Dean, Fan Wu, Shanghai Medical College, Fudan University

Dean Michael Lu, School of Public Health, UC Berkeley

10:00 am - 10:55 am | PANEL II: Migration

Moderator: **Prof Hsin-Chieh Chang**, School of Social Development & Public Policy, Fudan University

Prof Maria Amelia Viteri, College of Social Sciences and Humanities,
Universidad San Francisco de Quito

Prof Lih Rong Wang, Department of Social Work, Taiwan University

Ms Angela Guanzon, The Coalition to Abolish Slavery & Trafficking

10:55 am - 11:05 am | BREAK

11:05 am - 12:00 nn | PANEL III: Women's Health

Moderator: **Prof Sierin Lim**, School of Chemical and Biomedical Engineering, Nanyang Technological University

Dr Meghan Bohren, School of Population and Global Health,
University of Melbourne

Prof Xu Qian, School of Public Health, Fudan University

Ms Annie Kuo, School of Medicine, University of Washington

DAY 3

OCTOBER 21 | WEDNESDAY

SCIENTIFIC SESSION

9:00 am - 10:45 am | PANEL IV: COVID-19

Moderator: **Dean Na He**, School of Public Health, Fudan University

Prof Hongjie Yu, School of Public Health, Fudan University

Dr Matias Irarrazaval Dominguez, Ministry of Health, Chile

Dean Yuan Tao Hao, School of Public Health, Sun Yat-sen University

Prof Martin Wong, JC School of Public Health and Primary Care, The Chinese University of Hong Kong

Prof Emily Chan, Faculty of Medicine, The Chinese University of Hong Kong

10:45 am - 10:55 am | BREAK

10:55 am - 11:15 am | Awards Ceremony

Announcement of winners of the student case competition and poster contest

10:55 am - 11:15 am | Closing and Announcement of 2021 Conference

Welcome the host of 2021 conference

The 14th APRU Global Health Conference is organized in partnership with

USC Institute on Inequalities in Global Health



Topic: ***Reflections on Global Health Security***

DR MARGARET CHAN

*Inaugural Dean of Vanke School of Public Health Tsinghua University
Emeritus Director General of World Health Organization*

Dr Margaret Chan, from the People's Republic of China, obtained her medical degree from the University of Western Ontario in Canada. She joined the Hong Kong Department of Health in 1978, where her career in public health began.

In 1994, Dr Chan was appointed Director of Health of Hong Kong, the first woman to hold that position. In her nine-year tenure as director, she launched new services to prevent the spread of disease and promote better health. She also introduced new initiatives to improve communicable disease surveillance and response, enhance training for public health professionals, and establish better local and international collaboration. She effectively managed outbreaks of avian influenza and of severe acute respiratory syndrome (SARS).

In 2003, Dr Chan joined WHO as Director of the Department for Protection of the Human Environment. In June 2005, she was appointed Director, Communicable Diseases Surveillance and Response as well as Representative of the Director-General for Pandemic Influenza. In September 2005, she was named Assistant Director-General for Communicable Diseases. Dr Chan was elected to the post of Director-General on 9 November 2006. The Assembly appointed Dr Chan for a second five-year term at its sixty-fifth session in May 2012. Dr Chan's last term began on 1 July 2012 and ended on 30 June 2017.

On 2 April 2020, Dr Chan was appointed as inaugural Dean of Vanke School of Public Health, Tsinghua University, China.



Topic: ***Old and New Challenges to Universal Healthcare in Developing Countries***

PROF ALEJANDRO GAVIRIA

President of Universidad de los Andes

Former Minister of Health and Social Protection, Colombia

President Alejandro Gaviria is an Associate Professor at Universidad de los Andes. After having served as Dean of the School of Economics at Los Andes for six years, he was nominated by former Colombian President Santos as Colombia's Minister of Health and Social Protection, a role which he occupied from 2012 until 2018. After his time working in the national government, he returned to the UniAndes campus as Director of the Center for Sustainable Development Goals for Latin America, until he was elected President of Universidad de los Andes for four years in August 2019.

Alejandro Gaviria has had a broad career as a researcher, professor and civil servant. He completed his undergraduate degree in Civil Engineering from the Antioquia School of Engineering (Universidad EIA). He also has a master's degree in Economics from Universidad de los Andes and a PhD in Economics from the University of California San Diego.

In 2005, he was awarded the Juan Luis Londoño Medal by the Foundation for Research and Technology Promotion for his research's contributions to creating positive social impact for the Colombian public. In 2009, he won the Simón Bolívar journalism award for the best opinion article, and in 2010, Portafolio named him the best Professor of Economics and Business Administration in the country. In 2018, he was awarded the Order of Boyacá, which is the highest recognition that the Colombian government awards to distinguished citizens for services to the country. His most recent books include *Who Goes Up and Down: Education and Social Mobility in Colombia*; *At Least We Have the Words*; and *Today is Still Forever*.

Universal Health Coverage



Topic: ***Strengthening Health Systems to Tackle Major Disease Epidemics***

DR MINGHUI REN

WHO Assistant Director-General

Universal Health Coverage/Communicable and Noncommunicable Diseases

Dr Ren Minghui serves as Assistant Director-General for Universal Health Coverage/ Communicable and Noncommunicable Diseases at WHO headquarters. In this role, he oversees a complex portfolio of technical programmes covering HIV, viral hepatitis, tuberculosis, malaria, neglected tropical diseases, sexually transmitted infections, noncommunicable diseases, mental health and substance use. He currently represents WHO on the boards of the Global Fund to Fight AIDS, TB and Malaria, UNAIDS, and UNITAID. Prior to his appointment as Assistant Director-General, he spent nearly 30 years working in public health, including as Director-General for International Cooperation in the National Health and Family Planning Commission of the People's Republic of China. In China, his work initially focused on health policy and health reform, and later on international health cooperation and global health governance. Dr Ren is a medical doctor and holds a Master of Public Health and a PhD in Social Medicine and Health.

Universal Health Coverage

MODERATOR



DR. CHANTAL HERBERHOLZ

*Associate Professor
Faculty of Economics, Chulalongkorn University*

Dr. Chantal Herberholz is an Associate Professor at the Faculty of Economics, Chulalongkorn University, Bangkok, Thailand. She has served as director of the faculty's Centre for Health Economics, a WHO collaborating centre and a member of the Asia-Pacific Network for Health Systems Strengthening, since October 2017. Her research interests are in the areas of healthcare financing, health and household decision making, and trade in services.

SPEAKERS



PROF ZHI-JIE ZHENG

*University Endowed Chair Professor, Head of the Department of Global Health,
School of Public Health, Peking University*

TOPIC: *Quality of Care and Universal Health Coverage Convergence for a Resilient Health System*

Zhi-Jie Zheng, MD, MPH, PhD received his medical education and training from Shanghai Medical University in Shanghai, and MPH and PhD in Epidemiology from the University of North Carolina at Chapel Hill, North Carolina, USA. He served chronically as an Assistant Professor in the Departments of Medicine (Cardiology) and Preventive Medicine, University of Kentucky Medical Center, Lexington, Kentucky; as a Lead Epidemiologist and Section Chief in the Division for Heart Disease and Stroke Prevention, US Centers for Disease Control and Prevention (CDC), Atlanta, Georgia, and as a Supervisory Medical Epidemiologist and Senior Program Director in the Division for the Application of Research Discoveries, the National Heart, Lung, and Blood Institute, National Institutes of Health (NIH), Bethesda, Maryland, USA; as a University Endowed Chair Professor of Public Health and Medicine, and Dean of the School of Public Health at Shanghai Jiao Tong University in Shanghai, China. He holds leadership positions in a number of professional organizations. Dr. Zheng's current research focuses on 1) epidemiology and prevention strategies for diseases of major public health concerns, 2) emergency medical system development and policy; 3) public health emergency preparedness and responses; and 4) global health strategies and governance.



PROF WEN CHEN

*Professor of Health Economics, Director, Center for Pharmacoeconomic
Research and Evaluation, Fudan University*

TOPIC: *Co-construction and sharing to achieve Universal Health Coverage*

Professor Wen CHEN received his M.D. degree in social medicine and health management from Shanghai Medical University in 1998 and completed research fellowship at School of Public Health, University of California at Berkeley from August of 2000 to May of 2001.

Currently he serves as the Director of the Center for Pharmacoeconomic Research and Evaluation at Fudan University. He was the Dean of the School of Public Health at Fudan University from April 2013 to June 2017. Prof. Chen is often invited as investigator and advisor by national and municipal governments for various research programs in the field of Chinese healthcare system, national and provincial health insurance, pharmacoeconomics and pharmaceutical policy, health financing etc. He had more than 120 publications on international and Chinese health economics and management journals. He was awarded as the Excellent Talent in the New Century by the Chinese Ministry of Education in 2008.

MODERATOR



PROF GITA MISHRA

*Deputy Head, School of Public Health
Faculty of Medicine, The University of Queensland*

Gita Mishra is an NHMRC Principal Research Fellow and Professor of Life Course Epidemiology at the School of Public Health, University of Queensland. She is Director of the Australian Longitudinal Study on Women's Health, a major national study running since 1996 that has informed development of policy related to women's health. Prof Mishra also leads the InterLACE project, a major international consortium on reproductive health and chronic disease.

She is internationally recognised for her contribution to research on life course epidemiology and women's health. Her specific focus is on the factors that affect reproductive health from menarche to menopause, and the influence of reproductive health across the life course. In 2017, she was presented an honorary membership of Sigma International, a global nursing organization, for her contribution to women's health and was elected as a Fellow of the Australian Academy of Health and Medical Sciences (FAHMS).

SPEAKERS



PROF FAN WU

Deputy Dean of Shanghai Medical College, Fudan University

TOPIC: *Elderly care from a life course perspective*

Wu Fan, M.D./PhD, chief physician, doctoral supervisor, the national expert with special allowance of the State Council. She is now the deputy dean of Shanghai Medical College, Fudan University; the president of Shanghai Preventive Medicine Association; the Director of WHO Collaborating Center for Healthy City. She also serves as an expert of Shanghai municipal leading group for control and prevention of COVID-19, a member of the committee of Shanghai science and technology research group, and a member of China-WHO Joint Mission on COVID-19.

She has successively served as the founding director of National Center for Non-Communicable Disease Control and Prevention, China CDC; the director-general of Shanghai Municipal Center for Disease Control and Prevention (at the time the director-general of Shanghai Institutes of Preventive Medicine); the deputy director-general of Shanghai Municipal Health Commission, etc.

She has led to establish the national network for NCD control and prevention, set up the national NCD surveillance system and injury surveillance system, as well as to refine the surveillance system in Shanghai regarding on infectious disease, NCD AND nutrition. She led the Shanghai CDC team to successfully deal with influenza H1N1, avian influenza H7N9 and other public health emergencies, and successfully implement public health security for mass gathering, such as 2010 Shanghai World Expo. She played an important role on consultation of controlling COVID-19 at national and municipal level.

She is also a visiting professor at the School of Medicine at Vanderbilt University, the School of Public Health of the Chinese University of Hong Kong; a doctoral supervisor at School of Medicine, Shanghai Jiao Tong University and Shanghai University of Traditional Chinese Medicine. Meanwhile, she is the chairman of health statistics committee of Chinese Health Information Association.



PROF MICHAEL LU

Dean of School of Public Health, University of California, Berkeley

TOPIC: *Improving Global Health: A Life-Course Perspective*

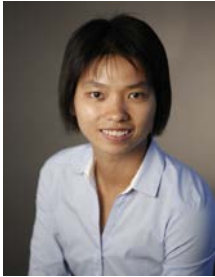
Dr. Michael Lu possesses decades of expertise in maternal and child health policy. He is currently dean of the school of public health at the University of California, Berkeley, and previously a senior associate dean at the Milken Institute School of Public Health at George Washington University.

Lu served as director of the federal Maternal and Child Health Bureau under the Obama Administration. During his tenure, he transformed key federal programs in maternal and child health, and launched major initiatives to reduce maternal, infant, and child mortality across the nation. He oversaw the launch and expansion of the federal Maternal, Infant, and Early Childhood Home Visiting (MIECHV) Program. For his leadership, he was awarded the prestigious U.S. Department of Health and Human Services' Hubert H. Humphrey Service to America Award in 2013.

Prior to his public service, Lu was a professor of obstetrics-gynecology and public health at UCLA, where his research focused on racial-ethnic disparities in birth outcomes from a life-course perspective. He co-directed the residency program in obstetrics and gynecology and a training grant in maternal and child health, and received several prestigious awards for his teaching. As a practicing obstetrician for nearly two decades, he has attended more than 1000 births, and has been voted one of the Best Doctors in America since 2005. Lu has served on three National Academy of Medicine Committees, and co-authored the recently released report *Vibrant and Healthy Kids: Aligning Science, Practice, and Policy to Advance Health Equity*.

Lu received his bachelor's degrees in political science and human biology from Stanford University, master's degrees in health and medical sciences and public health from UC Berkeley, medical degree from UC San Francisco, and residency training in obstetrics and gynecology from UC Irvine.

MODERATOR



PROF CYNTHIA CHEN

*Assistant Professor, Saw Swee Hock School of Public Health
National University of Singapore*

Cynthia Chen is an Assistant Professor at the National University of Singapore (NUS)'s Saw Swee Hock School of Public Health, and Fellow at the Schaeffer Center for Health Policy and Economics at the University of Southern California. Her current research focuses on the well-being and older adults, healthcare financing, economics of ageing and biostatistics. She is intrigued by how economic, technological, demographic and social changes can affect the burden of care, financing needs and optimal resource allocation in the future. Her research has been supported by the Singapore's Ministry of Health, Ministry of Education, the US National Institutes of Aging, and the Thai Health Promotion Foundation among others. To date, she has published more than 30 internationally peer-reviewed journals on societal ageing, the burden of chronic diseases, and cost-effectiveness research. Dr Chen obtained her PhD in Public Health, Masters and BSc in Statistics from NUS.

SPEAKERS



PROF INDRI HAPSARI SUSILOWATI

*Head of Occupational Health and Safety Department
Faculty of Public Health, University of Indonesia*

TOPIC: *Comparison of worker perception and caring burden on handling elderly family members with dementia in Indonesian rural and urban areas*

Dr. Susilowati graduated from Faculty of Public Health, Universitas Indonesia, majoring in Occupational Health and Safety in 1999 (Bachelor degree) and 2008 (Master degree). She holds her Ph.D. in Human Science Design from Kyushu University, Japan in 2012. Her research interests are ergonomics, human factors, aging, and safe transportation.

She is currently the Head of Occupational Health and Safety Department, Faculty of Public Health, Universitas Indonesia, since 2016. She achieved the best paper award in the APRU Population Aging Conference for the year 2019. She got the Oral Presenter Prize in the 93rd Annual Meeting for Japan Society for Occupational Health Conference of International Session for the year 2020.

She had some publications in international and national journals, such as Journal of Physiological Anthropology; Asia Pacific Journal of Public Health; International Journal of Occupational Health and Public Health Nursing; International Journal of Public Health and Research Development and many more. Besides that, she wrote a book about Indonesia Fall Risk Assessment Tools (I-FRAT) and Health Promotion in the Workplace.



PROF HUA FU

Director, Health Communication Institute, School of Public Health, Fudan University

TOPIC: *Asset based approaches for functioning of older adults in China*

Professor Fu Hua is Director of Health Communication Institute, School of Public Health, Fudan University. His research interests are focused on healthy ageing, setting-based health promotion especially healthy city program, non-communicable disease prevention. He is Vice-directors of Shanghai Association for Health Promotion. He is also PI of The National Best Course and the team leader of Co-sharing Courses on Preventive Medicine in China University. As chief editor, He published Textbook on Preventive Medicine for medical students (currently 7th version from third version), Science of Health Education (3rd edition), Theory and Practice on Healthy City, and so on.



PROF ANGELIQUE CHAN & DR AD MAULOD

Executive Director & Research Fellow

Centre for Ageing Research & Education,

Duke-NUS Medical School, National University of Singapore

TOPIC: *Evaluating a Community Health and Social Care Project: Translating Research into Policy*

Prof Angelique Chen holds joint appointment as Associate Professor in the Signature Program in Health Services & Systems Research, Duke-NUS Medical School and the Department of Sociology, NUS. She is the Inaugural Executive Director of the Centre for Ageing Research & Education (CARE, Duke-NUS). Dr Chan obtained her undergraduate degree, BA (Sociology) from Reed College, her PhD (Sociology) from the University of California at Los Angeles as a Rockefeller Foundation PhD fellowship awardee, and a US National Institute of Aging Post-Doctoral degree at the University of Michigan. Dr. Chan's current research examines disability transitions, mortality, and the effects of social support on health, caregiver burden, and use of long-term care services. She has published widely on aging issues in leading international journals including the Journal of American Geriatrics Society, Journal of Aging and Health, and Journal of Gerontology Series B: Social Sciences and book chapters. She is co-author of a book titled Ageing in Singapore: Service Needs & the State (Routledge 2006) and Co-editor of Ultra-low Fertility in Pacific Asia: Trends, Causes and Policy Issues (Routledge 2009). Her international work includes working with collaborators from Japan and USA on caregiving, work and retirement, and disability transitions. She has consulted for Singapore Ministry of Health, Ministry of Social and Family Development, Agency for Integrated Health, the United Nations, Temasek Foundation and the World Bank. She sits on various national committees related to ageing research and education.



Dr Ad Maulod is an anthropologist and Research Fellow at the Centre for Ageing Research and Education (CARE), Duke-NUS Medical School, Singapore. Ad specializes in cultural concepts of health and ageing and is an expert trainer in qualitative research methods. Ad has conducted several evaluation studies focusing on user experience of community health services and the factors that impact quality of care for vulnerable elders. Ad believes in the wisdom and empowerment of our elders by amplifying their stories and advocating for an inclusive, compassionate and just society for all-ages.

MODERATOR



PROF HSIN-CHIEH CHANG

Associate Professor, Department of Sociology, Fudan University

Hsin-Chieh Chang is an Associate Professor at the Department of Sociology at Fudan University. Dr. Chang received her PhD from the Department of Community Health Sciences at University of California Los Angeles. She was Postdoctoral Fellow at the Institute of Sociology at Academia Sinica from 2014 to 2015, and worked as an Assistant Professor at the Institute of Health Behaviors and Community Sciences at Taiwan University from 2015 to 2019. Dr. Chang is a mixed-methods social scientist working with migrants and other minority populations. Her current research interests concern the emerging forms of intra-Asia migration and their patterns, processes, and consequences. In her work, she applies analytical lenses across social and health sciences from gender and intersectionality, social determinants of migrant and minority wellbeing, community building and engagement, and urban change. Her work has appeared in the *Journal of Ethnic and Migration Studies*, *Ethnicity and Health*, *Journal of Family Issues*, *Chinese Journal of Sociology*, and edited volumes on Intra-Asia marriage migration.

SPEAKERS



PROF MARIA AMELIA VITERI

Research professor, Department of Anthropology, Universidad San Francisco de Quito

TOPIC: *The Impact of COVID-19 on Immigrants in Ecuador*

Maria Amelia Viteri holds a Ph.D. in Cultural Anthropology from American University in Washington D.C., with a concentration on Race, Gender and Social Justice, a M.A. in Gender and Development, and a B.A. in Linguistics. Dr. Viteri is an applied, cultural and sociolinguistic anthropologist who critically addresses gendered, racial, ethnic, and sexual identities across borders, as illustrated in her book *Desbordes: Translating Racial, Ethnic, Sexual and Gender Identities across the Americas* (2014, SUNY Press: New York). She's a research professor at the Department of Anthropology at Universidad San Francisco de Quito, and a Research Associate with the Department of Anthropology at University of Maryland, College Park. Dr. Viteri examines the central role 'race', ethnicity, class, gender, sexuality and migrant status play in structural inequality, including displacement, environmental impact, lack of access to health, safe housing, education, and community development. Dr. Viteri has published extensively, in English and Spanish, for academic audiences, the media, as well as to inform public policy, and international development efforts. Her latest research looks at how the pandemic has intensified housing insecurity, and in turn aggravated gender based violence.



PROF LIH RONG WANG

Professor, Department of Social Work, Taiwan University

TOPIC: *Gender and inclusion: Taking migrant workers as example*

Lillian (Lih Rong) Wang is currently a full professor in the Department of Social Work, Taiwan University; a visiting professor in Kyoto University and Chiba University, Japan (2019.09-2020.02); a visiting professor in Department of Social Welfare, UCLA (2016.02-2016.09); a visiting professor of Department of Social Policy and Intervention, University of Oxford (2011.07-2012.07).

She finished her Ph.D from School of Social Welfare, University of California, Los Angeles (UCLA), with research focusing on gender-justice of workplace, gender-based violence, and migrant workers' wellbeing.

Professor Wang has published several books such as *Women and Social Policy and Risk Society in Asian Counties*, and more than 55 papers in the research areas such as gender and social empowerment, family friendly policy, social inclusion and migrant workers, and gender, family and the states. Mostly, those articles were published in SSCI and TSSCI journals. In addition to academic work, she is active in NGOs and in different levels of governmental agencies in Taiwan by advocating gender equality and women's rights. She has been in the forums of UN CSW NGO many years to present her research and what best practices are in women's issues of Chinese Taipei.



MS ANGELA GUANZON

Survivor leader, The Coalition to Abolish Slavery & Trafficking

TOPIC: *Migrants and their Vulnerability to Human Trafficking*

Angela Guanzon was born and raised in the Philippines. She currently works full time as a Medical Biller and Coder, a survivor leader and a member of the CAST Survivor Leadership Program and HEAL Advisory Council Member.

A 2016 Fellow for the Human Trafficking Leadership Academy, supported by the Office of Trafficking in Persons (OTIP) at the US Department of Health and Human Services (DHHS). She participated in the development of 40 hours Human Trafficking Investigation course with California Commission on Peace Officer Standards & Training (POST), and in OVC TTAC Professional Development for Human Trafficking Survivors pilot training.

She was awarded the CAST Resilience Award and was recognized by US Congressman Royce for her Courage and leadership.

Ms Guanzon is an independent consultant to various local and federal agencies, for which she develops and provides training to health care providers, victim advocates and law enforcement work forces.

PANEL III

Women's Health

MODERATOR



PROF SIERIN LIM

Associate Dean (Global Partnerships) at the Graduate College and the co-Deputy Executive Director of the Institute for Health Technologies, Nanyang Technological University

Sierin Lim, PhD is an Associate Professor of Bioengineering at the School of Chemical and Biomedical Engineering at Nanyang Technological University (NTU). She is currently serving as the Associate Dean (Global Partnerships) at the NTU Graduate College and the co-Deputy Executive Director of the NTU Institute for Health Technologies. Her Bioengineered and Applied Nanomaterials Laboratory (BeANs Lab) focuses on the design and engineering of hybrid nano/microscale devices from biological parts by utilizing protein engineering as a tool for applications in medicine, energy, cosmetics, and food. She earned both her B.S. in Chemical Engineering and Ph.D. in Biomedical Engineering from University of California at Los Angeles (UCLA). She founded the Biomedical Engineering Society (Singapore) Student Chapter in 2009.

In 2013 she received the L'Oréal-UNESCO Singapore for Women in Science National Fellowships and in 2020 the Inaugural Singapore 100 Women in Tech List. She's the STEM Ambassador for Girls2Pioneers section of the United Women Singapore.

SPEAKERS



DR MEGHAN BOHREN

Senior Research Fellow in the Gender and Women's Health Unit, Centre for Health Equity, University of Melbourne, Australia

TOPIC: *Bringing women's voices into maternity care in the SDG era*

Dr Meghan Bohren is a Senior Research Fellow in the Gender and Women's Health Unit, Centre for Health Equity, University of Melbourne, Australia. She holds an Australian Research Council Discovery Early Career Research Award and Dame Kate Campbell Fellowship. Dr Bohren leads primary mixed-methods, implementation research and systematic reviews related to improving women's experiences with pregnancy and childbirth care, and works primarily with groups who are disadvantaged by systems of power.

Dr Bohren has a particular interest in using innovative qualitative research methods to bring community and health worker voices to the public health guideline development process.

She is an Editor with Cochrane, Section Editor of BMC Reproductive Health, and member of the GRADE-CERQual Steering Committee. Prior to joining University of Melbourne, Dr Bohren worked in the Department of Reproductive Health and Research at the World Health Organization, Geneva and Population Services International (PSI), Washington DC.

Dr Bohren obtained her PhD and MSPH from Johns Hopkins Bloomberg School of Public Health and BA in Psychology and Global Studies (African Studies) from The College of William and Mary, USA.

PANEL III

Women's Health



PROF XU QIAN

*Professor, Department of Maternal, Child and Adolescent Health, School of Public Health
Founding director of Global Health Institute, Fudan University*

TOPIC: *Quality of care and women's health: lessons from developing countries*

Dr. Qian Xu is a professor of the Department of Maternal, Child and Adolescent Health, School of Public Health, and the founding director of Global Health Institute, Fudan University, Shanghai, China. Currently, she also serves as the chair-elect of the Women's Health Care Branch and vice chair of Global Health Branch in Chinese Preventive Medicine Association. Prof. Qian was a member of the Scientific and Technical Advisory Group (STAG) of the Department of Reproductive Health and Research in the World Health Organization (2012-2017) and WHO Maternal and Perinatal Health Executive Guideline Development Group (2017-2019). Her main research areas cover safe motherhood and program evaluation, adolescent reproductive health and care, evidence-based health care, maternal health policy and system research, etc. As the PI, her research projects have been funded by UNICEF, UNFPA, European Commission, US-NIH Fogarty Center and UK-DFID since 2005. Prof. Qian was trained in both fields of medicine and public health. She got her bachelor and master degrees of Medicine from Shanghai Medical University and Doctoral degree in Epidemiology from Fudan University, China. She had more than two years' overseas working experience in the USA from 1990 to 1993. Since 1987, she has worked in the field of maternal, child and reproductive health for more than 30 years. She was the chair of the MCH department from 1998 to 2017. During 2000-2013, she served as a deputy dean of School of Public Health, Fudan University and was responsible for academic and foreign affairs, as well as a chair of FUSPH's IRB for ethics review.



MS ANNIE KUO

*Director of Marketing Communications, School of Medicine, Department of Obstetrics and Gynecology
University of Washington*

TOPIC: *Let's Talk About Sex: Why Infertility is a Ticking Time Bomb for the Asian Community*

Annie Kuo, MSc.IMC (Northwestern University), is director of marketing communications for the Department of Obstetrics & Gynecology at the University of Washington School of Medicine. She is an ambassador for RESOLVE: The National Infertility Association, U.S.A., advancing public awareness and education about infertility as a disease, particularly in her capacity as an Asian American woman to address cultural and social stigmas. Experiences of a pregnancy loss, infertility diagnosis, and fertility treatment led Annie to attend her first of six (and counting) Infertility Advocacy Days in Washington, DC. She later hosted monthly infertility support groups around the Seattle area and co-chaired the legislative training of federal family-building advocates for several years. Though she found resolution with the birth of her daughter in 2011, Annie currently represents the patient community in the Washington State working group fighting to pass legislation for a state insurance mandate to cover fertility treatment.

Annie believes in the power of narrative to create social impact both in the general public and among communities of color. Annie's story has been documented by NBC News, Mochi Magazine, Huffington Post, Pregnantish and Seattle Weekly, the book *Failure Pedagogies: Learning and Unlearning What It Means to Fail* (Peter Lang, 2020), and the film "Don't Talk About the Baby" (available on Vimeo).

In addition to her work in women's health, Annie also serves on the Men's Health Council at UW Medicine, working with urologists and patients to encourage men to see their doctors regularly and practice self-care. Annie dedicates this talk to her late husband Victor Kuo, who traveled often to Greater China as lead researcher of the Global Chinese Philanthropy Initiative. Victor passed away June 2020 from advanced heart failure at the age of 49.

MODERATOR



PROF NA HE

Dean, School of Public Health, Fudan University

Na He, MD., PhD., Professor of Epidemiology. Dr. He is an expert on HIV epidemiology, prevention and health care. He is a pioneer in HIV research and practice among men who have sex with men (MSM), biomedical intervention to prevent HIV transmission including early initiation of combination antiretroviral therapy and pre-exposure prophylaxis in China. Dr. He is also the founder of the Comparative HIV and Aging Research in Taizhou (CHART) cohort, which is an ongoing prospective longitudinal cohort extensively examining issues on aging-related non-communicable comorbidities. Currently, Dr. He is Vice Director of Public Health Division of the Chinese Medical Association, Vice President of Public Health Division of the Chinese Medical Doctors Association, Vice Chair of Chinese Epidemiological Association. He has served as a senior consultant to national public health education, promotion and multilevel anti-HIV/AIDS campaigns. Dr. He has over 300 peer-reviewed publications including over 100 research publications in international journals and a chapter in the Oxford Textbook of Global Public Health. Dr. He received Bachelor degree in Medicine and MSc in Epidemiology from the former Shanghai Medical University, PhD in Epidemiology from UCLA, and training in molecular biology as a visiting scholar at Hadassah Medical School of Hebrew University.

SPEAKERS



PROF HONGJIE YU

Professor, School of Public Health, Fudan University

TOPIC: *Evolving epidemiology and transmission dynamics of COVID-19 in China*

Hongjie Yu is a professor of infectious disease in School of Public Health, Fudan University. He was the former Director of the Division for Infectious Diseases, China CDC. Dr Yu joined the Expanded Program on Immunization Division of the Liaoning Provincial CDC in 1994, and he devoted himself in Liaoning province to eradicating polio and elimination of measles for seven years. After he got selected to participate in the first cohort of Chinese Field Epidemiology Training Program in China CDC in 2001, he was appointed as the Chief of the Branch of Respiratory Infectious Disease, Office for Disease Control and Emergency Response, China CDC in 2003, where he remained until accepting a new position as the Deputy director of the Office for Disease Control and Emergency Response in 2006. From 2010 to 2011, he worked in Centers for Disease Control and Prevention, Atlanta, GA, USA as a guest researcher. In 2012, he was promoted to Director, Division for Infectious Diseases, China CDC. After serving in public health in China CDC for 16 years, he moved to the School of Public Health, Fudan University as a professor of infectious disease since May 2017.

His research interests include the transmission dynamics, epidemiological parameters, disease burden, evaluation of interventions, patients orientated bedside clinical research to understand the interaction between pathogen infection and host immune response, as well as vaccine efficacy, effectiveness, safety, and cost effectiveness for emerging and re-emerging infectious diseases with public health importance, e.g. human with infection of novel animal influenza virus, seasonal influenza, Hand, foot, and mouth disease caused by enteroviruses, dengue, rabies, pneumococcal and Hib diseases.



DR MATIAS IRARRAZAVAL DOMINGUEZ

Director, Department of Mental Health, Ministry of Health, Chile

TOPIC: *Public policy responses to address the mental health consequences of the COVID-19 pandemic: Evidence from Latin America*

Matias Irarrazaval is a child and adolescent psychiatrist who works for the Ministry of Health of Chile, where he is the Director of the Department of Mental Health. Dr. Irarrazaval earned a Master of Public Health from Harvard T.H. Chan School of Public Health and also holds a Postdoctoral fellowship from Harvard Medical School. Previously, he worked for the Pan American Health Organization / World Health Organization as a specialist in evidence and research in mental health and as a consultant for UNICEF and UNESCO. He also currently works on several research projects which aim to implement prevention programmes and establish sustainable scaling of public health systems to improve access to mental health treatment in Chile and the Americas. Dr. Irarrazaval received the Paramjit Toor Joshi International Award from the American Academy of Child and Adolescent Psychiatry for his contributions to Global Mental Health and the American Society of Hispanic Psychiatry award for his impact in the lives of Latino families and patients with mental illness in Latin America.



PROF YUANTAO HAO

Dean, School of Public Health, Sun Yat-sen University

TOPIC: *Using Markov Chain Monte Carlo methods to estimate the age-specific case fatality rate of COVID-19*

Prof Hao Yuantao is currently Dean of the School of Public Health, Sun Yat-sen University. He received his undergraduate and graduate training in public health and preventive medicine at the West China University of Medical Sciences and his PhD in Biostatistics from Sun Yat-sen University. He is a professor of epidemiology and biostatistics. Prof. Hao's research interests are focused on the development of methods for assessing health-related quality of life and burden of disease, statistical methods for spatial-temporal analysis of infectious disease surveillance data, community-based preventive and control methods for major infectious diseases in China, and reforms of public health education.



PROF MARTIN WONG

*Associate Director (General Affairs), JC School of Public Health and Primary Care,
Faculty of Medicine, The Chinese University of Hong Kong*

**TOPIC: *Global Challenges of Managing Non-Communicable Diseases (NCDs)
during the COVID-19 Pandemic***

Professor Martin C. S. Wong is a specialist in Family Medicine and a researcher in the field of cancer screening and prevention of chronic diseases. Professor Wong has composed over three hundred publications in international peer-reviewed journals, and received over 15 research awards for studies in his research area, including the prestigious “1st Distinguished Research Making Family Medicine Shine Award” by the World Organization of Family Doctors in 2018. He is the Co-Chair of the NCD stream of APRU Global Health Programme; Co-Chairman of the Grant Review Board, Health and Medical Research Fund, Food and Health Bureau (FHB); the Convener of the Advisory Group on Hong Kong Reference Framework for Care of Diabetes and Hypertension in Primary Care Settings; a member of the Expert Advisory Panel in Implementation Science of the HKSAR government, and a member of the Research Council of the FHB. He is a reviewer of the Medical Research Council (MRC), United Kingdom; expert reviewer of the National Medical Research Council (NMRC), Singapore; external examiners of doctoral thesis in various Universities; and an external reviewer of the Public Policy Research Funding Scheme, Research Grant Council (RGC) of Hong Kong. His enthusiasm to teaching has been well received by students and has been selected for the “Master Teacher” and the “Annual Teacher of the Year Award” for seven years.

In 2016, he was conferred as an Honorary Fellow by the Hong Kong Academy of Nursing to recognize his achievements in the profession and contributions to primary care. He was appointed as the Editor-in-Chief of the Hong Kong Academy of Medicine in 2017; and Fellows of various Academies, Royal Colleges and professional societies. He was appointed as an Adjunct Professor of the Peking Union Medical College in March 2019; and Adjunct Professor of Global Health by the Peking University.



PROF EMILY CHAN

*Assistant Dean (External Affairs), Faculty of Medicine
The Chinese University of Hong Kong*

TOPIC: *What do we know about home care in COVID-19 in Asia metropolis: the case of Hong Kong*

Professor Emily Ying Yang Chan serves as Professor and Assistant Dean (External Affairs) at Faculty of Medicine, The Chinese University of Hong Kong (CUHK). She is Director of Collaborating Centre for Oxford University and CUHK for Disaster and Medical Humanitarian Response (CCOUC), Centre for Global Health (CGH), and Centre of Excellence (ICoE-CCOUC) of Integrated Research on Disaster Risk (IRDR), and Deputy Director of CUHK Jockey Club Multi-Cancer Prevention Programme. Professor Chan is also Co-chairperson of the WHO Thematic Platform for Health Emergency & Disaster Risk Management (Health-EDRM) Research Network and World Health Organization COVID-19 Research Roadmap Social Science working group, and member of Asia Pacific Science Technology and Academia Advisory Group (APSTAAG) of United Nations Office for Disaster Risk Reduction (UNDRR), World Meteorological Organization SARS-CoV-2/COVID-19 Task Team, Scientific Working Group (SWG) of World Health Organization Centre for Health Development (WHO Kobe Centre, WKC), Alliance of International Science Organizations on Disaster Risk Reduction (ANSO-DRR) International Steering Committee, and Third China Committee for Integrated Research on Disaster Risk (IRDR China). She was appointed CEO of GX Foundation in 2019 and concurrently serves as Visiting Professor (Public Health Medicine) at Oxford University Nuffield Department of Medicine, Honorary Professor at Li Ka Shing Faculty of Medicine, University of Hong Kong, and Fellow at FXB Center, Harvard School of Public Health.

Her research interests include emergency, disaster and humanitarian medicine, climate change and health, global and planetary health, Human Health Security and Health-EDRM, remote rural health, implementation and translational science, ethnic minority health, injury and violence epidemiology, and evidence-based primary care in resource deficit environments. She was awarded with the 2007 Nobuo Maeda International Research Award of the American Public Health Association, Caring Physicians of the World Award 2005, Ten Outstanding Young Persons of the World Award 2005, Hong Kong Humanity Award 2007, Leader of the Year Award 2016, National Geographic Chinese Explorer Award 2016, UGC Teaching Award 2017, National Teaching Achievement Award of People's Republic of China 2018, and as finalist of biennial United Nations Sasakawa Award for Disaster Risk Reduction 2019. Professor Chan has published more than 300 international peer-reviewed academic/technical/conference articles.

2020 Global Health Case Competition



Team Yellow Jackets



Toilet Paper Hoggars



MoreDoe

We had a total of 45 teams from 22 universities from different economies (Australia, China, Ecuador, Hong Kong, Indonesia, Japan, Korea, Mexico, Malaysia, the Philippines, Singapore, and the US) register for the competition. This year's challenge was relating to elderly care.

A huge congratulations to the three finalist teams (in no particular order):

University of Indonesia Team Yellow Jackets

Andrew Prasetya Japri
Caroline Augustine Atmojo
Jason Phowira
Stephen Gunawan
Vellia Justian

Chinese University of Hong Kong Toilet Paper Hoggars

Wai Jid Joshua Leung
Eden Chua
Cheuk Ying Audrey Chung
Asher Yeung
Chun Hei Thomas Lo

Yonsei University MoreDoe

Hyunjin Cha
Hyeokjoo Jang
Eundong Park
Hee Jin Jeon
Se Rin Kim

The three runner-up teams were:

Fudan University (PH Pro)
Chinese University of Hong Kong (Team Medeavour)
University of Maryland, College Park (Terps for Health)

Thank you to our expert panel of judges:

Prof Jonathan Guillemot (University San Francisco Quito)
Prof Brian Hall (New York University Shanghai)
Prof Masamine Jimba (University of Tokyo)
Prof Judith McCool (University of Auckland)
Prof Mu Li (Sydney University)
Ms Tina Lin (APRU)
Prof Leander Marquez (University of the Philippines)
Prof Haytham Sheeran (Osaka University)

Prof Sanjay Rampal (University of Malaya)
Ms Christina Schönleber (APRU)
Prof Tasdidaa Shamsi (University of Malaysia)
Prof Erlinda Palaganas (University of the Philippines)
Prof Hiroki Nakatani (Keio University)
Prof Martin Wong (Chinese University of Hong Kong)
Prof Mellissa Withers (University of Southern California)

A winning team will be selected and announced during the APRU Global Health Conference 2020, hosted by Fudan University. A prize of USD 500 will be awarded.

APRU Global Health Student Poster Contest

The APRU Global Health Poster Contest 2020 just released seven finalists from total 49 submissions across 15 economies and 26 universities. A prize of USD 500 will be awarded for the best undergraduate and best graduate posters (one in each category). The winners will be announced during the APRU Global Health Conference 2020.

Finalist Posters

Undergraduate Category



University of Malawi
Zaithwa Matemvu
Apatosa Villiera
Steve Chilmenji



University of Santo Tomas
Mary Kristine Pinpin
Chelsea Pineda
Krisalene Plazuela
Biana Pollo
Clare Quimson



University of Oregon
Tyra Judge

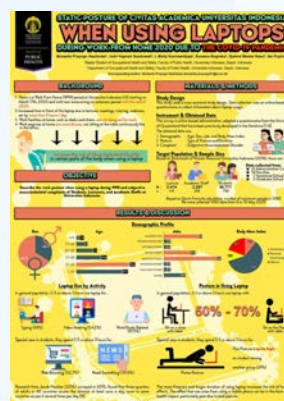
Graduate Category



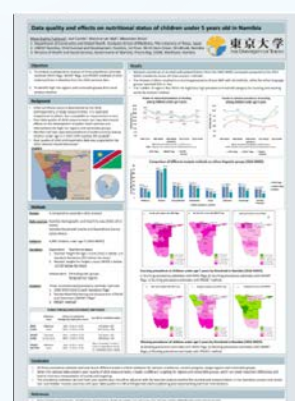
BP Koirala Institute of Health Sciences
Bikram Adhikari



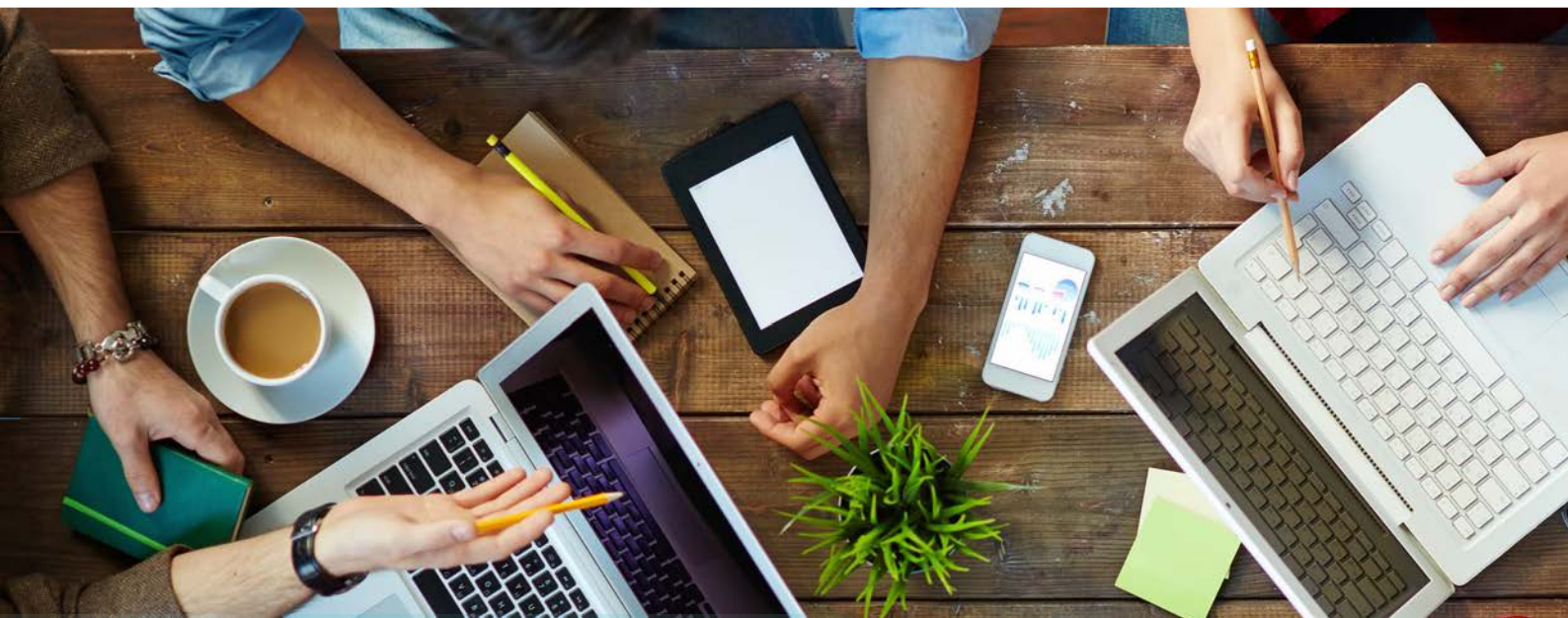
Fudan University
Zhixi Liu



Universitas Indonesia
Bonardo Prayogo Hasiholan



University of Tokyo
Maya Fujimura



ORGANIZING COMMITTEE

APRU Global Health
Virtual Conference 2020

Dr. Jin Li, Professor and Executive Vice President of Fudan University & Dean of Fudan University Shanghai Medical College

Dr. Gui Yonghao, Professor and Executive Vice President of Fudan University

Dr. Chen Zhimin, Professor and Vice President of Fudan University

Dr. Wu Fan, Professor and Vice Dean of Fudan University Shanghai Medical College

Dr. Lu Li'an, Director of Office of Global Partnerships, Fudan University

Dr. Tang Wenqing, Deputy Director of Office of Global Partnerships, Fudan University

Dr. Huang Zhili, Professor and Director of Office of Medical Science and Technology, Fudan University Shanghai Medical College

Dr. He Na, Professor and Dean of School of Public Health, Fudan University

Dr. Luo Li, Professor and Co-dean of School of Public Health, Fudan University

Dr. Chen Yingyao, Professor and Associate Dean of School of Public Health, Fudan University

Dr. Kan Haidong, Associate Dean of School of Public Health, Fudan University

Dr. He Gengsheng, Associate Dean of School of Public Health, Fudan University

Dr. Liu Daisong, Associate Dean of School of Public Health, Fudan University

Dr. Zheng Pin Pin, Professor of School of Public Health, Fudan University and APRU Global Health Program Advisory Member

Dr. Lu Yihan, Associate Professor and Vice Chair of Department of Epidemiology, Fudan University

APRU

Member Universities

Australian National University
California Institute of Technology
Chulalongkorn University
Far Eastern Federal University
Fudan University
Harbin Institute of Technology
Hsinchu Tsing Hua University
KAIST
Keio University
Korea University
Monash University
Nagoya University
Nanjing University
Nanyang Technological University
National University of Singapore
Osaka University
Peking University
POSTECH
Seoul National University
Shanghai Jiao Tong University
Taiwan University
Tecnológico de Monterrey
The Chinese University of Hong Kong
The Hong Kong University of Science and Technology
The University of Auckland
The University of British Columbia
The University of Hong Kong
The University of Melbourne

The University of Queensland
The University of Sydney
Tohoku University
Tsinghua University
Universidad de los Andes
Universidad San Francisco de Quito
University of California, Berkeley
University of California, Davis
University of California, Los Angeles
University of California, Riverside
University of California, San Diego
University of California, Santa Barbara
University of California, Santa Cruz
University of Chile
University of Chinese Academy of Sciences
University of Hawai'i
University of Indonesia
University of Malaya
University of New South Wales Sydney
University of Oregon
University of Science and Technology of China
University of Southern California
University of the Philippines
University of Washington
Waseda University
Xi'an Jiaotong University
Yonsei University
Zhejiang University

Note: Universities in bold are represented in the conference (as of October 13, 2020)



Special Edition of Journal on Migration

The Working Group on Migration is in charge of a special edition of the International Journal of Environmental Research and Public Health, which has an impact factor of 2.85. The title of the special edition, edited by Dr Mellissa Withers (USC), along with Dr Brian Hall (NYU Shanghai), Tharani Loganathan (University of Malaya), and Hsin-Chieh Wang (Fudan University), is "Patterns, Determinants, and Community-based Interventions of Migrant and Refugee Health."

Manuscripts on the following topics are especially welcome (although all relevant papers will be considered): improving healthcare services, trauma and mental health, immigration and labor

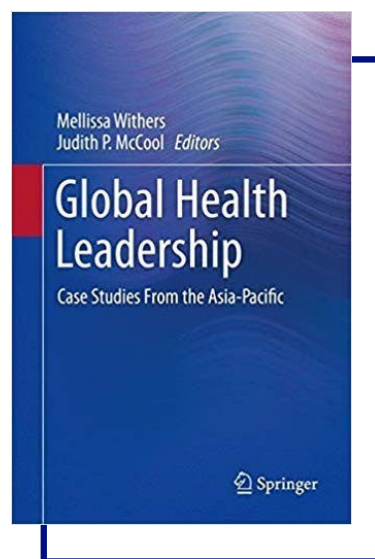
laws, the protection of migrant workers, occupational health, poverty and inequities, reduction of public resentment/discrimination, gender-based violence, sex work, migrants as brides, resettlement, and reintegration of migrants who return home. Several publication fee waivers for papers coming from low- or middle-income countries in the APRU network are available. Papers are published on a rolling basis. Deadline for submission is Nov 30.

For more information, visit:
https://www.mdpi.com/journal/ijerph/special_issues/MRH

APRU's Interdisciplinary Approach to Global Health Leadership

The book is entitled Global Health Leadership: Case Studies From the Asia-Pacific, and is co-edited by APRU Global Health Program leaders, Dr. Mellissa Withers of University of Southern California and Dr. Judith McCool of The University of Auckland. It covers a wide range of disciplines—from tobacco control and non-communicable diseases to maternal health services and disaster preparedness—in a variety of societal contexts. Global health experts from both inside and outside of the APRU network contributed to this book.

For the full feature of the book, visit this link:
<https://apru.org/interdisciplinary-approach-to-global-health-leadership/>



Get APRU GHP updates, photos
and global-health related news



/aprughp



APRU_GH



apruglobalhealth.org

SAVE THE DATE

APRU Global Health Conference 2021



GLOBAL URBAN HEALTH

16-18 November 2021

The University of Hong Kong
Pokfulam, Hong Kong



SAVE THE DATE

Teaching in Virtual Environments

APRU Global Health Program at the University of Southern California
in collaboration with
Global STEM Education Program at the University of Oregon

Save the Dates!

November 12/13

Technology for Remote Teaching

December 3/4

Authentic Online Assessment

January 21/22

Lab and Fieldwork in Remote Settings



USC Institute on Inequalities in Global Health



APRU
Global Health



UNIVERSITY OF
OREGON

More info or to register: apru.org/our-work/pacific-rim-challenges/global-health



2021 Annual APRU Global Health Virtual Case Competition

Teams should consist of 4-6 students from any discipline or university. Teams will have 12 weeks to develop a proposal based on the case challenge. Registration will begin on Feb 1, 2021. Competition begins March 15, 2021.

For more information, visit:

<https://apruglobalhealth.org/education-opportunities/casecompetition/>



www.apruglobalhealth.org